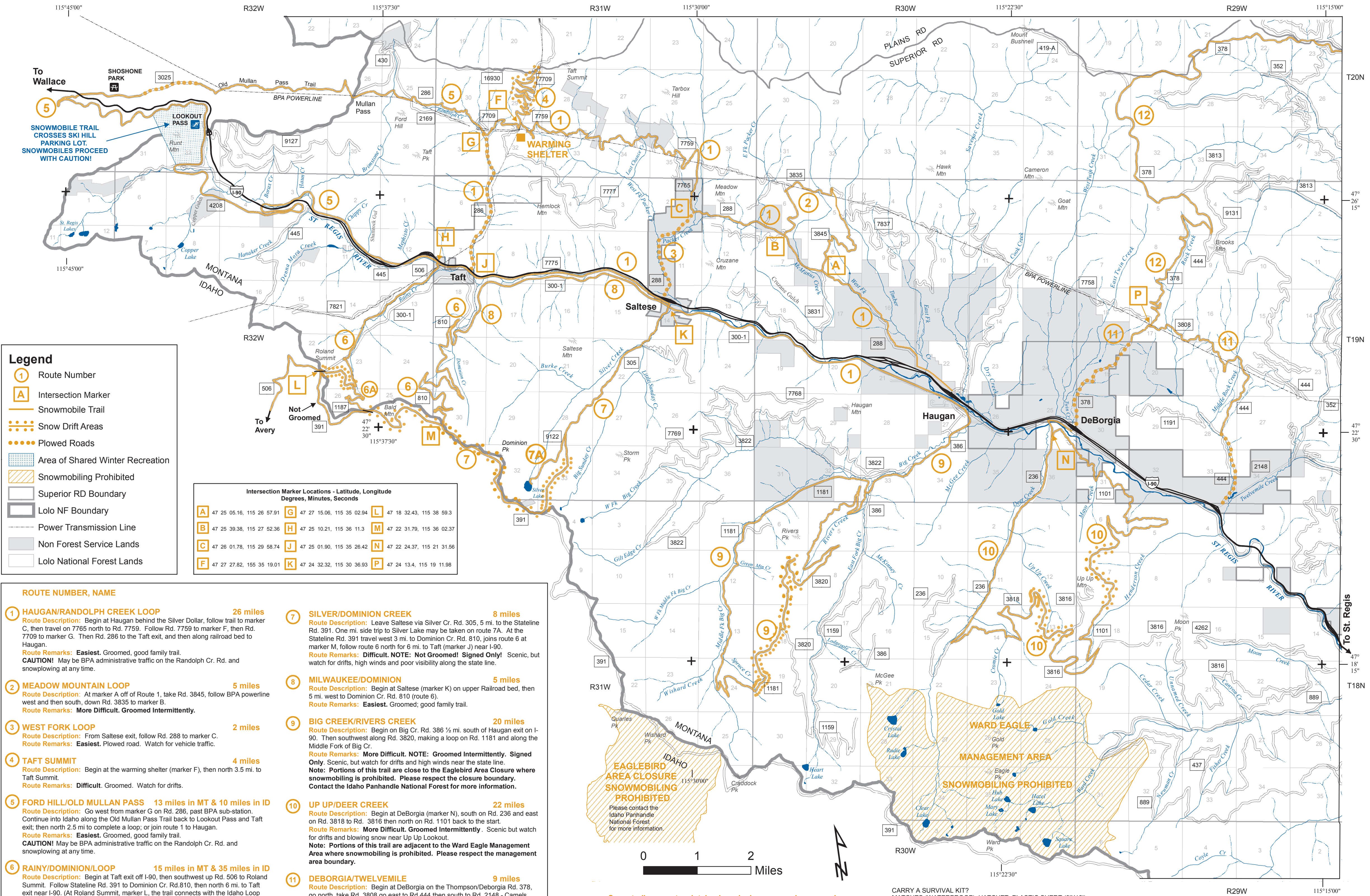


Not all roads are shown on this map. Please stay on designated routes between junction markers.

LOLO NATIONAL FOREST
SUPERIOR RANGER DISTRICT
SNOWMOBILE TRAILS
2015

IT IS RECOGNIZED THAT THERE ARE INHERENT RISKS TO THE SPORT OF SNOWMOBILING AND THE PRUDENT SNOWMOBILER SHOULD BE AWARE OF SUCH RISKS AND TAKE THE NECESSARY PRECAUTIONS.

BE AWARE THAT CROSS COUNTRY SKIERS, SNOWSHOERS, GROOMING EQUIPMENT, BIG GAME, OR DOG SLEDDERS MAY BE ON SNOWMOBILE TRAILS AT ANY TIME.



Some trails are not maintained, packed or groomed on a regular basis. Designated snowmobile routes may be closed at any time due to logging operations or snowplowing. For current information on logging activities and track conditions, contact the Superior Ranger Station, (406) 822-4233, or the Montana Nightriders Snowmobile Club, Haugan, Montana, (406) 678-4242.

CARRY A SURVIVAL KIT? MATCHES (WATERPROOF), HATCHET, PLASTIC SHEET (9'X12'), FIRST AID KIT, SPARE FOOD PACK, SNOWSHOES OR SKIS - ALL THE NECESSITIES OF A GOOD SURVIVAL KIT.

Snowmobiling on Forest Service plowed roads is not authorized by the Forest Service. Check County and State road regulations for snowmobile use on plowed County and State roads.

Compiled by the Superior Ranger District and the Montana Nightriders Snowmobile Club. Map printed with funding from the Montana State Department of Fish, Wildlife and Parks Snowmobile Program.